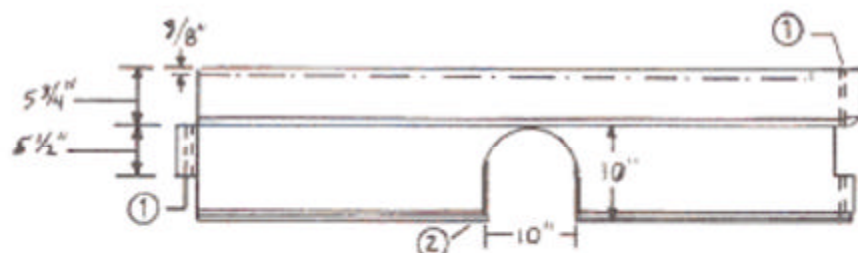
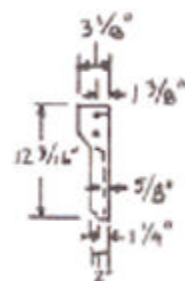
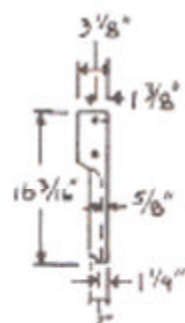


DATA FOR 12" DEPTH PLATE					
LENGTH	21 1/2"	33 1/2"	45 1/2"	57 1/2"	69 1/2"
WEIGHT (LBS.)	54	80	106	134	164



DATA FOR 16" DEPTH PLATE							
LENGTH	21 1/2"	33 1/2"	45 1/2"	57 1/2"	69 1/2"	81 1/2"	93 1/2"
WEIGHT (LBS.)	70	104	142	178	229	232	264



- ① HOLES FOR 5/16" GALVANIZED JOINT PINS.  
 ② NO KNOCKOUTS ON 6", 7", OR 8" PLATES.

CAT NO.	CONCRETE VAULT DATA				STEEL COVER DATA - 3/8" FLOOR-PLAIN				
	DIMENSIONS - I.D.		WEIGHT PER TIER		OR W/ 7 1/2" ROUND OR 7" x 14" READING LID				
	WIDTH	LENGTH	12"	16"	OVER-ALL SIZE	TOTAL WEIGHT	NO. PCS.	SIZE EA. PIECE	WEIGHT EA. PIECE
722	21 1/2"	21 1/2"	160	250	24" x 24"	90	1		
723	21 1/2"	33 1/2"	269	349	24" x 36"	103	1		
724	21 1/2"	45 1/2"	321	425	24" x 48"	139	1		
725	21 1/2"	57 1/2"	377	497	24" x 60"	170	1		
726	21 1/2"	69 1/2"	408	565	24" x 72"	203	2		
733	33 1/2"	33 1/2"	321	417	36" x 36"	160	2	18" x 36"	80
734	33 1/2"	45 1/2"	373	493	36" x 48"	209	2	24" x 36"	105
735	33 1/2"	57 1/2"	429	565	36" x 30"	278	2	30" x 36"	129
736	33 1/2"	69 1/2"	488	667	36" x 72"	307	2	36" x 36"	154
744	45 1/2"	45 1/2"	425	569	48" x 48"	277	2	24" x 48"	139
745	45 1/2"	57 1/2"	481	641	48" x 60"	342	2	30" x 48"	171
746	45 1/2"	69 1/2"	540	743	48" x 72"	407	2	36" x 48"	204
755	57 1/2"	57 1/2"	537	713	60" x 60"	427	2	30" x 60"	214
756	57 1/2"	69 1/2"	596	815	60" x 72"	509	3	24" x 60"	170